



testo 882

Committing to the future

The testo 882 Thermal Imager with a robust 320 x 240 detector



The testo 882 Thermal Imager stands out because of the **new detector with a 320 x 240 array**. It allows for even more precise infrared images.

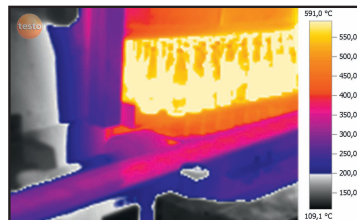
With **76,800 measurement points** you can see small temperature details of the targeted area. It makes it much easier for you to **detect anomalies and weaknesses from greater distances**.

The built-in digital camera with power LEDs simultaneously store a parallel visual image of the targeted area. **The power LEDs guarantee you optimum illumination** of dark areas when recording real images.

Testo IRSOFT software package includes our **TwinPix** feature which allows you to **overlay the thermal and visual image** to better understand the targeted conditions. Easy operation with simple icons and intuitive menus.

This thermal imager can also be **equipped to measure high temperatures up to 1022°F**.

Prevent Failures. Increase Efficiency. Reduce Downtime.



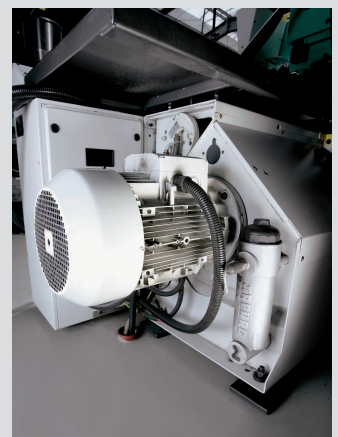
APPLICATIONS



Electrical Maintenance



Building Thermography



Mechanical Maintenance

Features

- 320 x 240 array for a clear, accurate image
- Large field of view with 32° lens
- High image quality: NETD < 60mk
- Voice recording with the practical headset
- Built-in digital camera with power LEDs
- Min/Max on area calculation
- Lens protection glass
- High temperature measurement up to 1022°F
- Manual and Dynamic motor focus for sharp images and true one hand operation
- Isotherm display in instrument
- Auto hot/cold spot recognition



The testo 882 Thermal Imager with a robust 320 x 240 detector

Technical Data

Detector type	FPA 320 x 240 pixels, a.Si
Thermal sensitivity (NETD)	<60 mK at 30°C (86°F)
Field of view / min. focus distance	32° x 23° / 7.8" (standard lens)
Geometric resolution (IFOV)	1.7 mrad
Image refresh rate	9 Hz
Focus	manual and motor focus
Spectral range	8 to 14 µm
Optical field / min. focus distance	33° x 25° / 15.7"
Image size	640 x 480 pixels
Image display	3.5" LCD with 320 x 240 pixels
Display options	only IR / only digital image / IR and digital image
Video output	USB 2.0
Color palettes	9 options (ironbow, rainbow, blue-red, greyscale, inverted grey, sepia, testo, iron)
Temperature range	-4°F to 232°F (-20°C to +100°C) +32°F to +662°F (0°C to 350°C), switchable
High temperature option	+662°F to +1022°F (350°C to +550°C)
Accuracy	± 2°C, ± 2% of rdg, (-4°F to +662°F) ± 3°C, ± 3% of rdg, (+662°F to +1022°F)
Minimum diameter measurement point	0.2" at 3 ft.
Setting emissivity	0.01 to 1 manuell
File format	.bmt; export options in .bmp, .jpg, .png, .csv, .xls
Data storage device	2 GB SD card (approx. 1000 images)
Battery type	Li-ion battery
Operating time	4 hours
Operating temperature range	5°F to +104°F
Storage temperature range	-22°F to +140°F
Protection class of housing	IP 54
Weight	approx. 2 lbs
Dimensions	6" x 4.2" x 10.3"
Tripod mounting	Yes with adapter
Housing	ABS
PC Software	
System requirements	Windows XP (Service Pack 2) Windows Vista, Windows 7, USB 2.0 interface
Warranty	2 years

Accessories

Emissivity adhesive tape Heatproof up to 572°F	0554 0051
Two-bay battery charger	0554 8801
Spare battery	0554 8802
Tripod	0554 8804
Protective lens	0554 8805

Ordering Information

882 Thermal Imager Kit

Part no. 0560 0882 70

All Imager Kits will be delivered in a hard shell case including SD card, USB cable, software power supply and tripod mounting plate.

Distributor:

testo, Inc.
(800) 227-0729
e-mail: info@testo.com
www.testo.com

Information subject to change without notice.
10TES726 1/11 2.5m